

Natchez Trace State Park

(Located 12 miles south of exit 116 on I-40 between Nashville & Memphis, TN)

West Tennessee I-40 Overnight Group Package

Spend the night in a beautiful West Tennessee State Park Inn located on the quiet shore of Pin Oak Lake ... in a forest ... away from noise and traffic! Natchez Trace State Park is 40 minutes from Jackson, TN and less than two hours from Nashville & Memphis.

\$45.00 per person
(Based on double occupancy)

Package Includes:

1 Guestroom with 2 queen beds
1 Buffet Dinner & Park Program
1 Buffet Breakfast
All taxes and gratuities

Rates are for groups of 20 or more paying passengers. Confirmation of reservation is required 30 days prior to the arrival date.

Reservations

Contact Ronnie Douglas at 615.532.7707 or send email to Ronnie.Douglas@state.tn.us.



Henry Horton State Park

(Located 60 miles south of Nashville, TN on Hwy 31A)

Group Tour Package Four Antebellum Homes Tour

One Day/One Night

\$70.00 per person

(Based on double occupancy; Taxes & gratuities included)

Itinerary:

- 4:00 p.m. Arrival at Henry Horton Resort Park**
Check-in Guestroom (2 double beds)
- 6:00 p.m. Dinner and Park Program**
- 7:00 a.m. Continental Breakfast**
- 8:00 a.m. Departure for Tours**
Drive to Spring Hill, TN (30 min; 26 miles)
- 9:00 a.m. Rippavilla Plantation** (1.5 hr. with guide)
- 10:30 a.m. Early History Farm Tour** (1 hr tour, April – Oct.)
Drive to Columbia (12 min.; 9 miles)
- 11:45 a.m. Athenaeum Rectory** (1.5 hr. with guide)
- 12:30 p.m. Lunch** (box lunch with beverage)
- 1:15 p.m. James K. Polk Home** (1.5 hr. with guide)
Drive to Elm Springs (5 min.; 3 miles)
- 3:00 p.m. Elm Springs Plantation** (1.5 hr. with guide)
Drive time to I-65 (15 min.; 10 miles)
- 4:30 p.m. Depart**
- 5:00 p.m. Arrive at I-65, exit # 37**



Rates are for groups of 20 paying passengers or more. Basic Tours conducted Tuesday's thru Saturday's, 9:00 a.m. - 4:00 p.m. Comps given for bus driver and tour operator. Confirmation of final count is required 45 days prior to arrival.

Henry Horton State Park

Located in the rolling hills of Middle Tennessee, is situated on the former estate of the late Henry H. Horton, 36th Governor of Tennessee. The park is best known for its scenic golf course and skeet/trap range. Amenities include a Resort Inn, Restaurant, Cabins, Conference Rooms, Disc Golf, Swimming, and Canoe Trips on the historic Duck River.

Reservation Information:

Contact: Ronnie Douglas, Sales Mgr. TN State Parks, at 615.532.7707 or send email to Ronnie.Douglas@state.tn.us. Customized packages are available upon request.

Henry Horton / Antebellum Homes Tours (continued):

Rippavilla Built in the 1850's was the home of Major Nathaniel Cheairs. It played an active role during the Civil War for both Confederate and Union armies. Rippavilla is noted for beauty, history and a romantic love story breaking a long family tradition. The 22 room house was the scene of a great amount of social activity. Being on the route of both Confederate and Union armies, the home was at the center of Civil War history.

Early History Farm Life Museum Located just out-side the back door of the Rippavilla is a barn with over 500 pieces of Tennessee farm and horse equipment and tools dated from the 1800's.

The Athenaeum Rectory The Athenaeum Rector was begun in 1835 by Nathan Vaught, Maury County's master builder, as a residence of Samuel Polk Walker, nephew of President James K. Polk, and became a private school for girls. The Moorish-Gothic architecture of the façade of The Athenaeum Rectory is not typical of the general style in 1835. The colorful flashed glass around the front door, the original fountain on the front lawn, the chandelier which was originally a gasolier and the wood-carpeting floors are all unusual features of the home.

James K. Polk Home Built circa 1816 by Samuel Polk, father of the 11th President of the United States, James K. Polk. The Polk Home is the only surviving residence of the eleventh president other than the White House. This home was the first brick home in Columbia and contains the original furnishings from President and Mrs. Polk's years in Tennessee and Washington, D.C. The home is a Registered National Historical Landmark.

Elm Springs A magnificent Greek revival mansion built in 1837 by Nathan Vaught. Situated on the old stage road that led from Pulaski to Franklin, Elm Springs witnessed the long marches of both the Confederate and Union armies, and served as the headquarters of Confederate General Frank E. Armstrong in 1864. It was the home of Colonel Abram Looney, a prominent local attorney who commanded the famous Company H, Maury County Grays. Other attractions include the family cemetery and Gift Shop, which features a wide variety of Southern heritage items available nowhere else in the area.

Paris Landing State Park

(Located on the banks of the TN River and Kentucky Lake at Buchanan, TN, Hwy U.S. 79)

Heritage & Civil War Group Tour Package

(March thru November)

One Day/ One Night Package \$68.00 per person

(Based on double occupancy; taxes & gratuities included)

Itinerary:

- 3:30 pm** **Arrival and check in guestroom**
6:00 pm **Buffet Dinner & Park Program**
- 7:30 am** **Buffet Breakfast**
8:30 am **Leave for Land Between the Lakes (26 miles)**
9:30 am **Arrive at 1850's Homeplace**
 Stroll Back in Time (1.5 hr. guided Tour)
11:00 am **Leave for the Elk and Bison Prairie (11 miles)**
 (Allow 30 min. self drive tour through Prairie)
12:00 pm **Box Lunch & Beverage at Golden Pond Picnic Area**
1:00 pm **Leave for Fort Donelson National Battlefield (30 miles)**
1:45 pm **Tour Fort Donelson Visitor Center (1.5 hr)**
3:00 pm **Depart to Paris, TN**
3:30 pm **Arrive Paris-Henry County Heritage Center**
 (30 min. guided tour)
4:00 pm **You're welcome to visit the Historic Downtown Paris**
 Shopping District
 Driving time from Paris, Tennessee to I-40, exit #126, (1.hr)



Rates are for groups of 20 paying passengers or more. Basic tours conducted Monday through Saturday, 9:00AM –4:00PM. Comps given for bus driver and tour operator. Confirmation of final number count is required 45 days prior to arrival.

Paris Landing State Resort Park

Located on the shores of one of the nation's largest man-made lakes, the once thriving pioneer Tennessee River Landing point now hosts visitors from across the nation's mid-section. The park offers a full service restaurant, inn, conference center, outdoor pool, marina, and 18 hole golf course with picturesque views of the beautiful Kentucky Lake.

Reservation Information

Contact Ronnie Douglas, Sales Mgr. TN State Parks at 615.532.7707 or send email to Ronnie.Douglas@state.tn.us. Brochures and customized packages are available upon request.

Paris Landing / Heritage & Civil War Group Tour (continued):

Land Between the Lakes 1850's Homeplace

The living history farm recalls the lifestyles and customs of a family living between the Cumberland and Tennessee Rivers-the dominant features of this area. A setting of farm animals, antique furnishings, historic log buildings, and traditional activities re-creates a rich tradition of farming from the mid-19th century. Interpreters dressed in period clothing, bring the farm to life as they demonstrate agricultural skills and work habits that changed the area's landscape.

Elk & Bison Prairie

Enjoy watching elk, bison and other wildlife species as you drive through a prairie that represents a landscape once typical of western Kentucky and Tennessee. Interpretive stops along the route tell the story of the land, vegetation, wildlife, and people who inhabited Kentucky's barrens.

Fort Donelson National Battlefield

Site where Southern gunners and Union tars exchanged "Iron Valentines" during their duel on February 14, 1862. For four days in mid-winter 1862, Northern and Southern armies clashed over the Confederate held Fort Donelson. On February 16, the "Unconditional Surrender" to General Ulysses S. Grant marked the first step in the Union's plan to split the Confederacy. The loss of the fort and control of the Cumberland River was devastating to the South. With Union control of the Cumberland and Tennessee Rivers, the Confederate defense line extending from the Mississippi to the Allegheny Mountains was broken. A gateway for the invasion of the south was now open to the Union.

Paris-Henry County Heritage Center

The Paris-Henry county Heritage Center is housed in Cavitt Place, a 1916 Italian Renaissance Revival mansion built by Colonel O.C. Barton. Colonel Barton was one of the leaders of the community in the late 19th and early 20th centuries. The Center is also home of the Conway Bible, which was presented to confederate soldiers upon their departure. The Bible was purchased at auction and brought home over 100 years later. This is a museum dedicated to local history with very interesting exhibits.



Pickwick Landing State Park

Located on the banks of the TN River and Pickwick Lake at Pickwick Dam, TN
(Hwy. 57, near AL, MS, TN state lines)

Civil War Group Tour Package

One Day/One Night Package \$84.00 per person

(Based on double occupancy; taxes & gratuities included)

Itinerary: March - October

- 3:30 pm** Arrival Pickwick Landing State Park /
Check-in Guestroom
- 6:00 pm** Buffet Dinner & Park Program
- 7:00 am** Buffet Breakfast
- 8:30 am** Guestroom Check-out/
Depart for Shiloh Military National Park
- 9:00 am** Arrive at Shiloh National Military Park
- 9:15 am** Orientation Film/ Guided Tour
America's Best Preserved Civil War Battlefield
(featuring 151 monuments, 217 cannons, 450 historic tablets)
- 12:00 pm** Box Lunch at Shiloh Military National Park
- 1:00 pm** Depart for Savannah, TN (20 minutes/ 15 Miles)
- 1:30 pm** Arrive at Cherry Mansion in Savannah
U.S. Headquarters for General Grant
(Tour of grounds 30 min.)
- 2:00 pm** Depart for TN River Museum
(2 blocks from Cherry Mansion)
- 2:15 pm** Arrive at TN River Museum (1 hour tour)
- 3:15 pm** Depart Savannah, TN (2 hrs to Memphis or Nashville)



Rates are for groups of 20 or more paying passengers. Basic tours conducted Monday through Saturday, 9:00am – 4:00pm. Comps given for bus driver and tour operator. Confirmation of final number count is required 45 days prior to arrival.

Pickwick Landing State Park

Is located on the shores of Pickwick Lake and is a water sportsman's paradise. Pickwick Landing was a riverboat stop dating from the 1840s. In the 1930s, during the depression, the site was chosen for one of the Tennessee Valley Authority's Dams on the Tennessee River.

Reservation Information

Contact Ronnie Douglas, Sales Mgr., TN State Parks, at 615.532.7707 or send email to Ronnie.Douglas@state.tn.us.

Pearl of a Tour

Natchez Trace State Park

Tennessee River Freshwater Pearl Museum, Farm & Jewelry Showroom

Natchez Trace Resort Park is located at exit 116 on I-40 between Nashville & Memphis, TN
TN River Pearl Farm is located at exit 133 on TN 191 North/Birdsong Rd, 10 miles north of I-40

Package available May through October, Monday – Friday
\$90.00 per person (based on double occupancy)

Package Includes:

- 1 Guestroom with 2 queen beds, at Pin Oak Lodge, Natchez Trace State Resort Park
- 1 Buffet Dinner & Park Program
- 1 Continental Breakfast

Tour Itinerary:

Drive 37 miles to the TN River Pearl Farm

10:00 a.m. – Pearl Farm Tour & Lunch (4 hours)

Noon – Catered BBQ Ribs and Smoked Chicken Luncheon at Pearl Farm Pavilion
(20 minutes to return to exit 133 on I-40)

Information:

Discover the miracles of Tennessee with this special package featuring two intriguing points of interest, located in the western region of the state! Enjoy staying at Natchez Trace Resort, a beautiful West Tennessee State Park Inn, nestled among the oak trees of Pin Oak Lake. Visit the only freshwater pearl-culturing operation in the North American continent. The Pearl Farm is located on the banks of the Tennessee River's Kentucky Lake at Birdsong Resort and Marina. This could be the best mystery trip ever for your group. If you would like to learn how our official state gems are grown in Tennessee River mussels, plan your next overnight outing today!

Reservations:

Contact Ronnie Douglas, Sales Mgr., TN State Parks, at 615.532.7707 or send email to Ronnie.Douglas@state.tn.us.

Rates are for groups of 20 or more paying passengers. Confirmation of reservation is required 30 days prior to the arrival date.



Fall Creek Falls State Park

(Located near Pikeville, TN, 2.5 hours southeast of Nashville or 2 hours southwest of Knoxville)

Motor Coach Group Hikers Package

Visit one of Tennessee's most beautiful parks located atop the Cumberland Plateau. It is one of the most scenic and spectacular outdoor recreation areas in America. Laced with cascades, gorges, waterfalls, sparkling streams, and lush stands of virgin hardwood timber, the park beckons those who enjoy nature at its finest. Hikers have six trails to opt for short or long walks around the lake and to and from the base of Fall Creek Falls.

Package available Sunday – Thursday

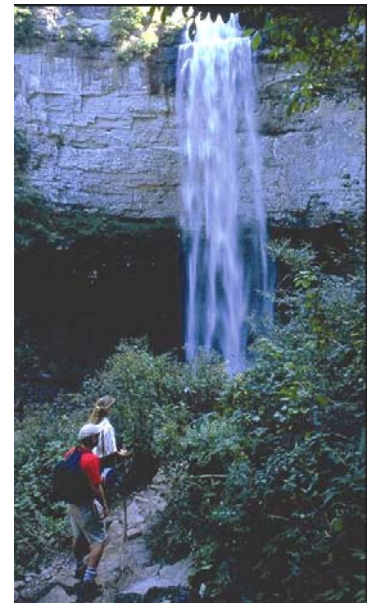
\$119.60 + taxes and gratuities for 2 guests, per day

Package Includes:

Guestroom for 2 guests (2 double beds)
Breakfast for 2 guests
2 Hiker Sandwich Box Lunches with beverages
Dinner for 2 guests

Reservations:

Contact Ronnie Douglas, Sales Mgr., TN State Parks, at 615.532.7707 or send email to Ronnie.Douglas@state.tn.us.



Group rates apply to 20 or more guestrooms or 40 guests, based on double occupancy. Available Sunday thru Thursday only and a two night minimum stay is required. Confirmation of reservation is required 30 days prior to the arrival date.

Paris Landing State Park

(Park located at Buchanan, TN, 1.5 hours northwest of Nashville)

Motor Coach Group Turtledoves Package

Paris Landing State Park is located on the western shores of one of the nation's largest man-made lakes, Kentucky Lake, and the Tennessee River. Enjoy a mystery trip for Valentines Day, or any special occasion, filled with storytelling, music, good food and a guestroom with a beautiful scenic lake view.

Package available Sunday – Thursday from November 2006 thru March 2007
\$115.00 + taxes and gratuities for 2 guests, per day

Package Includes:

Guestroom for 2 guests (2 double beds)

Breakfast for 2 guests

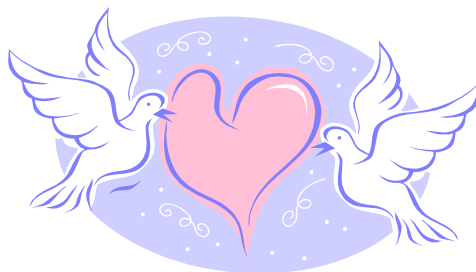
Dinner for 2 guests (10 oz. Rib eye Steak, baked potato, tossed garden salad, dessert, beverage)

Complimentary gift upon arrival

Reservations:

Contact Ronnie Douglas, Sales Mgr., TN State Parks, at 615.532.7707 or send email to Ronnie.Douglas@state.tn.us.

Group rates apply to 20 or more guestrooms or 40 guests, based on double occupancy. Available Sunday thru Thursday only. Confirmation of reservation is required 30 days prior to the arrival date. Other meal choices and plans are available upon request.



Paris Landing State Park

(Park located at Buchanan, TN, 1.5 hours northwest of Nashville)

Motor Coach Group Hikers Package

Paris Landing Resort is located on the western shores of one of the nation's largest man-made lakes and the Tennessee River. Hiking at Land Between the Lakes offers over 200 miles of trails and rustic roads leading to some of the most scenic spots in the national recreation area. Take a short hike along the Fort Henry Trail or a long hike on the North/South Trail.

Package available Sunday – Thursday

\$122.11 + taxes and gratuities for 2 guests, per day

Package Includes:

Guestroom for 2 guests (2 double beds)
Breakfast for 2 guests
2 Hiker Sandwich Box Lunches with beverages
Dinner for 2 guests
Luggage Handling



Reservations:

Contact Ronnie Douglas, Sales Mgr., TN State Parks, at 615.532.7707 or send email to Ronnie.Douglas@state.tn.us.

Group rates apply to 20 or more guestrooms or 40 guests, based on double occupancy. Available Sunday thru Thursday only. Confirmation of reservation is required 30 days prior to the arrival date.

