

# TOPOGRAPHIC QUADRANGLE MAPS

SMARTT MOUNTAIN QUADRANGLE  
TENNESSEE - SEQUATCHIE COUNTY  
7.5 MINUTE SERIES (TOPOGRAPHIC) 103-SW

Note: Always include Topographic Quad  
Map name and number

White Oak Swamp Park - BM HNC 58, Elevation 1893

LATITUDE: 35 DEGREES, 30', 55"

LONGITUDE: 85 DEGREES, 26', 09"

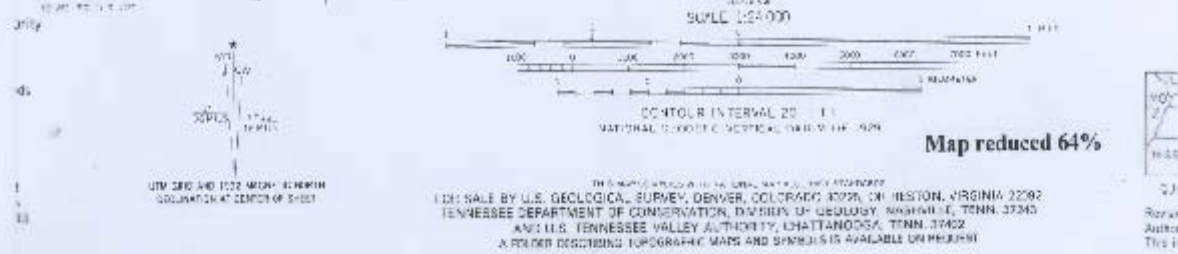
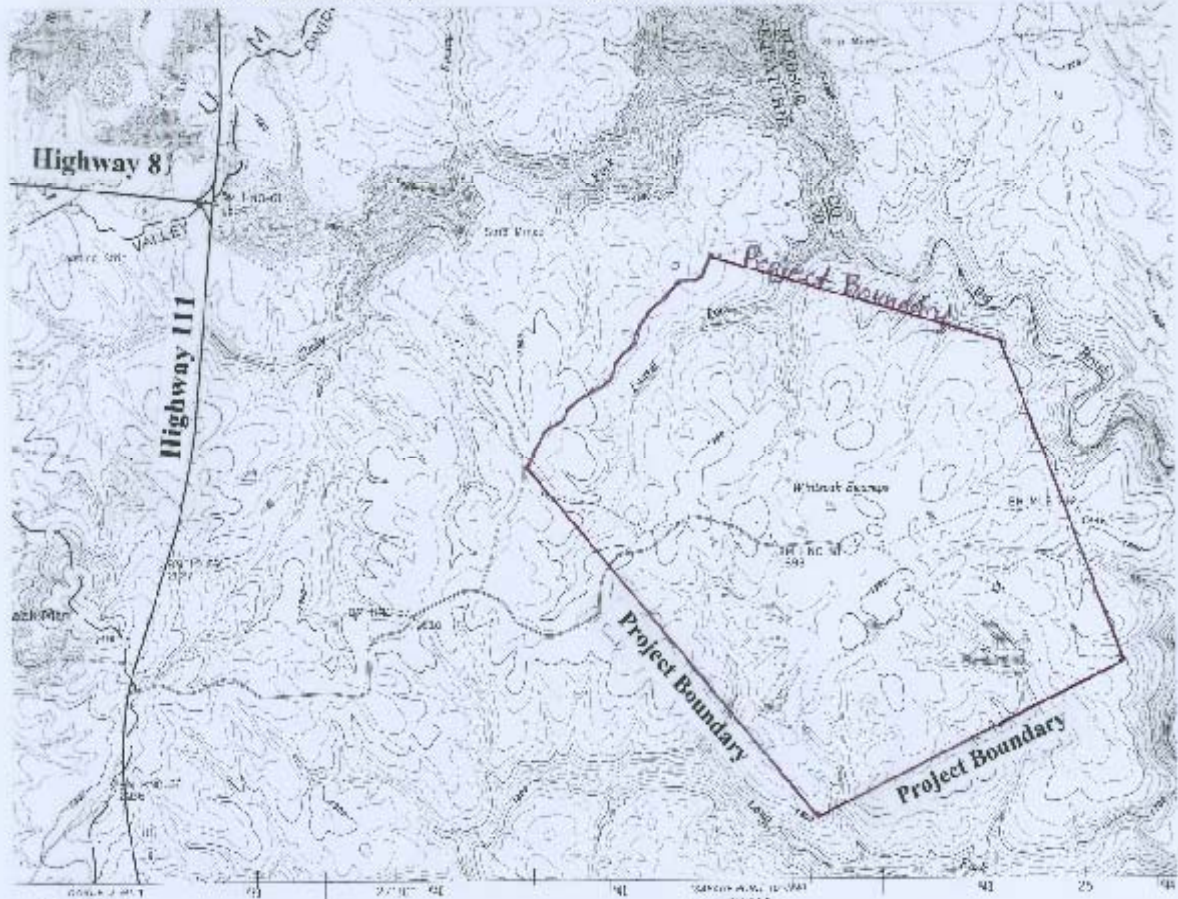


EXHIBIT 3